

# Green Map Guimarães 26



**1 Penha**  
Penha Mountain is Guimarães main continuous green area and the highest point in the municipality, bringing together natural, landscape and recreational value. The site includes an extensive forested area, walking trails, viewpoints, a campsite and several visitor areas, serving as a place for leisure and contact with nature. Due to its scale and diversity, it is a relevant example of green-space management and the promotion of wellbeing. Penha Mountain is also an important educational resource, allowing the observation of habitats, species and conservation practices in a real setting.



**2 Biodiversity Route**  
The Biodiversity Route is a walking trail linking Penha Mountain to the City Park, allowing the observation of different habitats and species along around four kilometres. The route is supported by interpretive panels that help us understand the importance of this place for local fauna and flora. The trail serves as a space for leisure and environmental education, promoting awareness of nature conservation. The route has been the target of tree reinforcement and monitoring actions, contributing to the ecological enhancement of the territory.

**3 City Park**  
City Park is one of Guimarães main green areas, with around twenty hectares dedicated to leisure, contact with nature and the promotion of quality of life. This area includes lawns, a lake, shaded areas and different habitats that host fauna and flora species typical of the territory. The presence of water and diverse vegetation contributes to environmental comfort and local climate regulation. The park is used by visitors of all ages for walks, sports activities and moments of rest, functioning as an essential element in the urban green structure.



**4 Municipal Market**  
The Municipal Market of Guimarães stands out for its offer of fresh produce and for encouraging local consumption, strengthening the relationship between producers, traders and the community. Within this dynamic, the Plastic-Free Market project promotes replacing single-use plastics with more responsible alternatives, such as reusable bags made from repurposed textiles and compostable options for fruit and vegetables. The aim is to encourage conscious purchasing habits, value the local economy and raise awareness of choices that reduce environmental impact.

**5 District C**  
District C is an area of urban innovation that integrates cultural, creative and scientific spaces, linked to the rehabilitation of Couros' industrial heritage. It functions as a living lab where solutions for mobility, energy, waste and land use are tested, bringing the city closer to the climate transition. The cluster brings together educational facilities, research spaces, areas for artistic experimentation and meeting places, enabling different audiences to actively use the territory. District C shows how urban regeneration can support sustainability, combining heritage preservation with new functions and participation models. The project is recognised at European level for its contribution to environmental, cultural and social innovation.



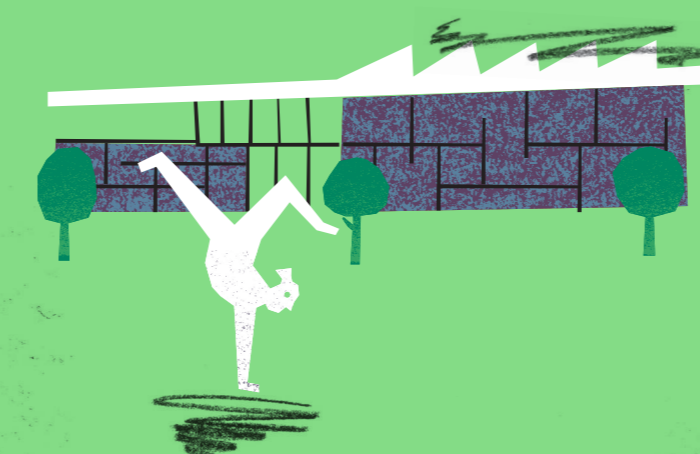
**6 Community Garden**  
The Community Garden is a public area dedicated to urban agriculture, enabling residents to grow produce for their own consumption in individual plots. The project promotes direct contact with nature, encourages more sustainable eating habits and values the fertile soils of the Veiga de Creixomil. The space also serves as an educational resource, offering activities that strengthen environmental literacy and understanding of natural cycles. The garden contributes to community wellbeing, creating opportunities for hands-on learning, social interaction and active participation in the management of green spaces.



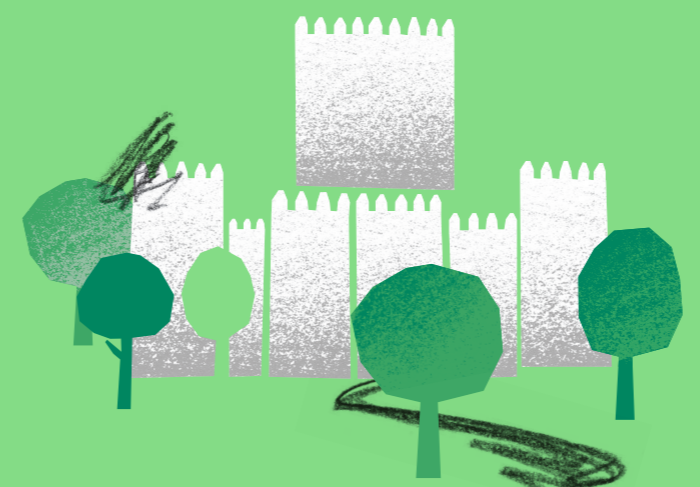
**7 Laboratório da Paisagem**  
Laboratório da Paisagem is a structure dedicated to research, education and technical support in environmental sustainability. Housed in a rehabilitated former industrial unit, it develops projects in areas as diverse as biodiversity, water resources, climate, health and wellbeing, and circular economy. This Centre hosts researchers, promotes awareness-raising initiatives and coordinates educational programmes. It acts as a link between science, the community and public policies, producing applied knowledge and supporting the implementation of solutions that contribute to climate resilience, sustainable resource management and the municipality's environmental value.



**8 Retention Basins**  
The Retention Basins of the Costa/Couros Stream are climate-adaptation infrastructures built to reduce flood risk in the lower part of the city. Located at strategic points, they temporarily store large volumes of water, regulating the streamflow and reducing pressure on the water system during periods of heavier rainfall. The intervention integrated ecological enhancement solutions, such as restoring the riparian gallery, stabilising the banks and creating a green-blue corridor that strengthens natural connectivity. These basins contribute to urban resilience, improving safety, ecosystem functioning and the relationship between the population and the riverside environment.



**9 Self-sustaining Building**  
The Gymnastics Academy of Guimarães is a facility dedicated to training and competition, designed with energy-efficiency and environmental-integration criteria. The building – striking for its cork cladding – uses sustainable solutions such as rainwater capture and reuse systems, photovoltaic panels for energy production, and geothermal energy for climate control. These elements reduce consumption, improve thermal performance and lower the facility's ecological footprint. The space was planned to ensure appropriate conditions for sports practice, promoting comfort, safety and indoor air quality. The Gymnastics Academy shows how public facilities can incorporate sustainable construction principles, serving as a local reference for adopting practices aligned with the climate transition.



**10 Latito Hill Gardens**  
Latito Hill Gardens are a green area integrated into Guimarães historic zone, surrounding the Guimarães Castle and the Ducal Palace, where protected trees and botanical elements typical of the territory reinforce the site's environmental value. The space includes an interpretive route that supports species identification and understanding of the ecosystems present, as well as a garden of aromatic and medicinal plants that expands its educational interest. These gardens combine biodiversity, views over the city and a calm atmosphere, highlighting the importance of preserving urban green cores.

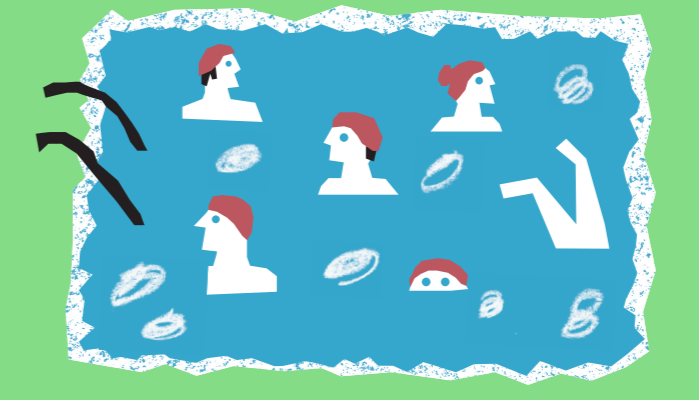
**11 Ave and Selho Greenways**  
The Ave and Selho Greenways are green corridors along the banks of the municipality's main rivers, creating continuous routes for pedestrian mobility and enjoyment of nature. These trails, intended for pedestrians and cyclists, connect different urban and rural areas through restored riverside spaces. Interventions include removing invasive species, re-naturalising the banks, applying natural engineering techniques and planting native species, strengthening ecosystem stability. The greenways function as infrastructures for leisure, environmental education and sustainable travel, enhancing the landscape and contributing to the population's connection with water resources and the territory's natural heritage.



**12 Three Mills Park, Castelões**  
Three Mills Park is a green area in the north of the municipality, next to the Ave River, resulting from the recovery of a natural space marked by former mills and sulphurous waters. The park includes a 1.6-kilometre walking trail and a forested area featuring oak groves and pinewoods, offering a calm setting for walks and outdoor activities. The renewal included informational elements about local biodiversity and improved visitor conditions, enabling a better understanding of the relationship between natural heritage, former land uses and the surrounding riverside landscape.



**13 São Torcato Route**  
The São Torcato route follows rural paths connecting the Sanctuary, the Old Church, old mills and traditional agricultural areas, allowing observation of this valley's characteristic landscape. The route, of low difficulty, combines riparian vegetation areas, "vinhas de enforcado" (traditional overhead-trained vines) and cultivated fields, illustrating practices that shaped local life. Part of the trail will coincide with the Selho Greenway, facilitating connection to other natural points in the municipality. The route values historical and environmental heritage, offering direct contact with cultural elements and the biodiversity associated with agricultural and riverside systems.



**14 Taipas Thermal Baths**  
Taipas Thermal is a wellbeing complex integrating thermalism, health and spa spaces, drawing on the properties of its mineral waters. The facility combines treatment areas, a thermal circuit and relaxation spaces, offering suitable conditions for prevention and recovery activities. Banhos Velhos, a historic building associated with thermal use since the Roman period, was rehabilitated as a cultural and leisure space, reinforcing the link between heritage and contemporary life. This ensemble values the village's natural resources and is a key point of interest in the territory.

**Guimarães is widely recognised as a city rich in historical and cultural heritage, but it is also a green city, full of parks, trails and natural corners to discover. Dozens of km<sup>2</sup> of the territory are covered by forest, home to an outstanding wealth of biodiversity. Discover this green heritage.**

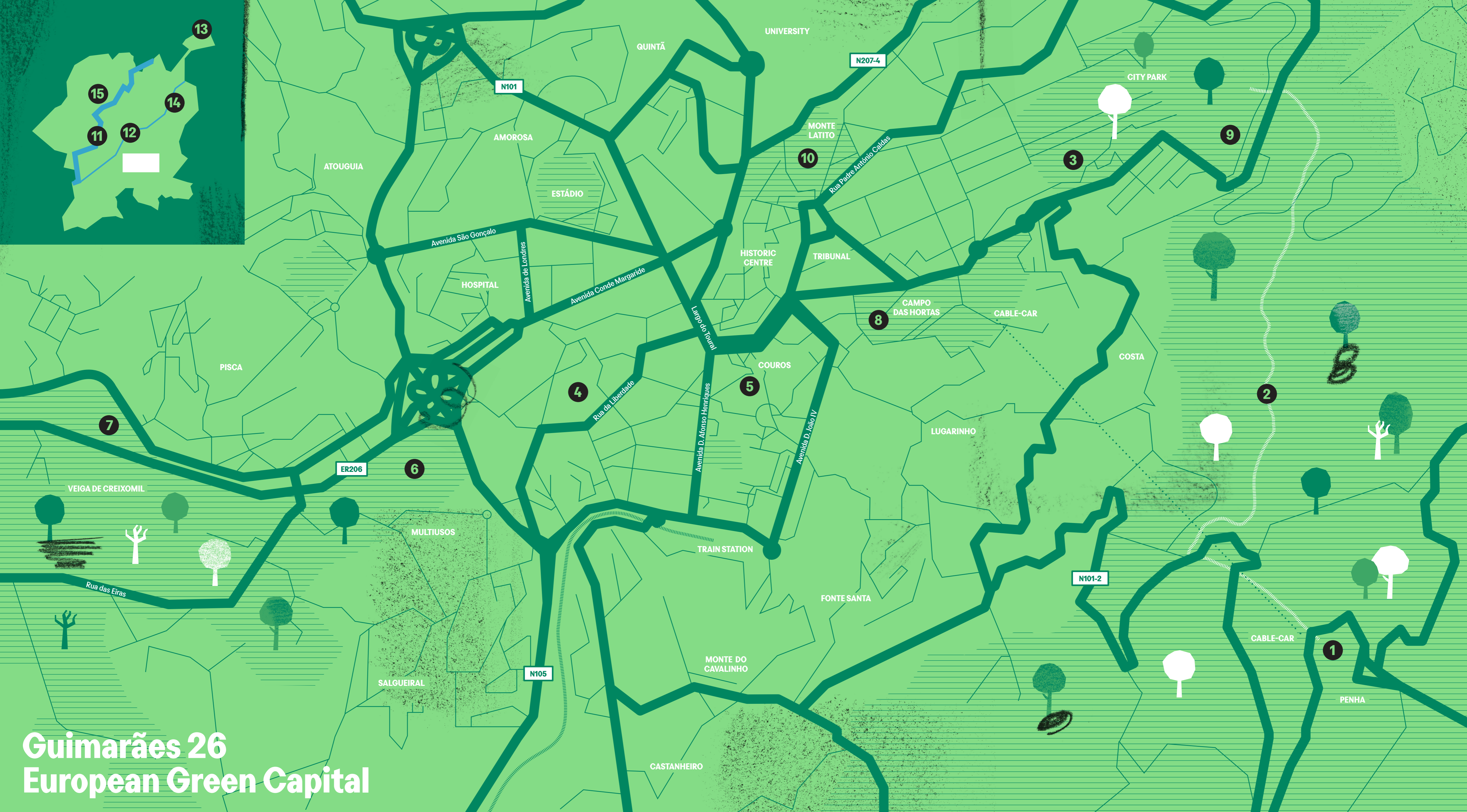


Edition  
Guimarães 26  
European Green Capital  
Texts  
Laboratório da Paisagem  
Proofreading  
Central de Informação  
Design and Illustration  
Design by OOF

December 2025



# Guimarães 26 European Green Capital



**1 Penha**  
Get to know Guimarães "lungs", with 60 hectares of green area, where heritage and biodiversity meet.

**2 Biodiversity Route**  
Walk the Biodiversity Route, a surprising itinerary that reveals Guimarães biodiversity.

**3 City Park**  
Explore the City Park, a space that combines public-use areas for leisure and physical activity with ecologically sensitive areas, ensuring balance and conservation.

**4 Municipal Market**  
Shop locally in a plastic-free market and discover regional products with unique flavours that contribute to a sustainable food system.

**5 District C**  
Experience the dynamism of District C, a true laboratory of creation, innovation and change.

**6 Community Garden**  
Explore the Community Garden, a living space where hundreds of vimeanenses grow organic produce in the heart of the Veiga de Creixomil.

**7 Laboratório da Paisagem**  
Knock on the door of Laboratório da Paisagem, a centre for research and education across multiple areas of sustainability.

**8 Retention Basins**  
Discover the Retention Basins along the Costa/Couros Stream, built to solve flooding in the lower part of the city.

**9 Self-sustaining Building**  
Visit the region's first self-sustaining building: a space that combines sports practice with efficient resource management.

**10 Latito Hill Gardens**  
Explore Latito Hill Gardens, where the natural landscape meets striking historical heritage.

**11 Ave Greenway 12 Selho Greenway**  
Embrace nature and riverside landscapes on the Ave and Selho Greenways, green corridors that connect the entire municipality.

**13 Three Mills Park, Castelões**  
Explore Three Mills Park, a natural and almost untouched area where the Ave preserves a stretch of native riparian gallery and lagoons that retain its original identity.

**14 São Torcato Route**  
Travel back in time along the São Torcato route, an example of communion between history and nature.

**15 Taipas Thermal Baths**  
Rediscover the thermal charm of Taipas, where hot water rising from the earth tells centuries of history and wellbeing.